

# ERSTI KALENDER

ASTA HOCHSCHULE BREMEN

**21/22**

Information & Calendar for freshmen

(ENGLISH VERSION)





Surname:

---

Address:

---

Academic  
subject:

---

Phone:

---

E-mail:

---

Birth date:

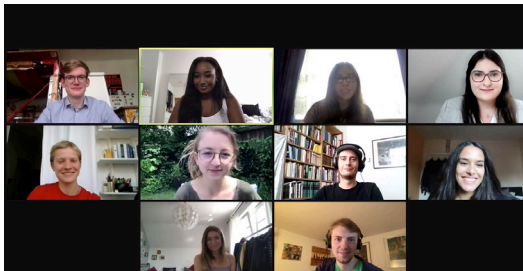
---



## Welcome to the Hochschule Bremen!

As the current board of the General Students' Committee (AStA) it is a pleasure for us to welcome you with our Ersti - Calendar. It is a fact that the study entry 2021 differs in many ways from the previous years: online seminars, changed Bafög conditions and much more. We have done our best to adapt all the information in this calendar to the current situation, but it can always happen that things change during the printing period or during the semester, whether for social, political or administrative reasons. Therefore, you will find plenty of information here in a short and compressed form, complemented with a QR code that will lead you to detailed and regularly updated information. We hope that this summary of information can answer many of your open questions and facilitate your entry into your new life as a student.

*not in the picture:*  
Janis Van der Ginten, Jonas Brunschier  
Michelle de Leeuw und Dinip Joester



Johannes Steffen  
Jula Eichhorn

Binta Jadama,  
Julia Mollenhauer  
Theresa Müller

Öznur Yildiz  
Jerome Geisinger  
Joscha Knobloch

Tomke Ziegenbein  
Merit Mikhail

Pandemic or not - from now on you are part of the student body of the Hochschule Bremen. This means that, as students, you have many rights and duties, but also opportunities to shape your experience at the Hochschule Bremen. After all, studying does not only mean an academic education, but also the opportunity to shape your own life and your surroundings. Even if everything from registration for classes to group membership is completely new to you now: Don't let yourself be put off! The university offers a wealth of opportunities for personal growth in political, cultural or social matters! Take the time and have the courage to shape this world yourself!

**WE ARE LOOKING FORWARD TO HAVING YOU!**

**BINTA JADAMA**  
Communication officer

**MERIT MIKHAIL**  
Social affairs officer

1.	STUDIYNG AT HSB BREMEN	..30
----	------------------------	------

---

2.	FRESHMAN ORENTATION	..44
----	---------------------	------

---

3.	THE „SEMESTERTICKET“	..62
----	----------------------	------

---

4.	STUDENT FINANCING BAFÖG & CO	..86
----	---------------------------------	------

---

5.	THE STUDENT BODY	..100
----	------------------	-------

---

6. ASTA SR & CO ..114

---

7. ELECTIONS AT THE HSB ..134

---

8. SURVIVING AND LIVING  
IN BREMEN ..146

---

9. GROUPS, CLUBS & CO ..162

---

10. STUDENT ADVICE ..180

---

# annual planner - winter semester 2021/22

october

november

december

fr 1	Beginning of Winter Semester	mo 1	we 1
sa 2		tu 2	th 2
su 3	Day of German unity	we 3	fr 3
mo 4	registration for university sport	th 4	sa 4
tu 5		fr 5	su 5
we 6		sa 6	mo 6
th 7		su 7	tu 7
fr 8		mo 8	we 8
sa 9		End of Module registration	th 9
su 10		tu 9	fr 10
mo 11		we 10	sa 11
tu 12		th 11	su 12
we 13		fr 12	mo 13
th 14		sa 13	tu 14
fr 15		su 14	we 15
sa 16		mo 15	th 16
su 17		tu 16	fr 17
mo 18	Start of lectures	we 17	sa 18
tu 19		th 18	su 19
we 20		fr 19	mo 20
th 21		sa 20	tu 21
fr 22		su 21	we 22
sa 23		mo 22	th 23
su 24		tu 23	Christmas break
mo 25		we 24	fr 24
tu 26		th 25	sa 25
we 27	Event "studying with child"	fr 26	1st Christmas Day
th 28		sa 27	su 26
fr 29		su 28	2nd Christmas Day
sa 30		mo 29	mo 27
su 31	Reformation day	tu 30	tu 28
		we 29	fr 29
		sa 30	sa 30
		su 31	th 30
			fr 31
			New Year's Eve



# january

# february

# march

sa 1 <b>New Year</b>	tu 1	tu 1
su 2	we 2	we 2
mo 3	th 3	th 3
tu 4	fr 4 <b>End of lectures</b>	fr 4
we 5	sa 5	sa 5
th 6	su 6	su 6
fr 7	mo 7	mo 7
sa 8	tu 8	tu 8
su 9	we 9	we 9
mo 10	th 10	th 10
tu 11	fr 11	fr 11
we 12	sa 12	sa 12
th 13	su 13	su 13
fr 14	mo 14	mo 14
sa 15 <b>re-registration Summer Semester</b>	tu 15 <b>Deadline re-registration</b>	tu 15
su 16	we 16	we 16
mo 17	th 17	th 17
tu 18	fr 18	fr 18
we 19	sa 19	sa 19
th 20	su 20	su 20
fr 21	mo 21	mo 21
sa 22	tu 22	tu 22
su 23	we 23	we 23
mo 24	th 24	th 24
tu 25	fr 25	fr 25
we 26	sa 26	sa 26
th 27	su 27	su 27
fr 28	mo 28	mo 28
sa 29		tu 29
su 30		we 30
mo 31		th 31 <b>End Winter Semester</b>

# annual planner - summer semester 2022

april

mai

june

fr 1 <b>New semester ticket!</b>	su 1 <b>May Day</b>	we 1
sa 2	mo 2	th 2
su 3	tu 3	fr 3
mo 4	we 4	sa 4
tu 5	th 5	su 5
we 6	fr 6	mo 6 <b>Whit Monday</b>
th 7	sa 7	tu 7
fr 8	su 8	we 8
sa 9	mo 9	th 9
su 10	tu 10 <b>End of Module registration</b>	fr 10
mo 11	we 11	sa 11
tu 12	th 12	su 12
we 13	fr 13	mo 13
th 14	sa 14	tu 14
fr 15 <b>Good Friday</b>	su 15	we 15
sa 16	mo 16	th 16
su 17	tu 17	fr 17
mo 18 <b>Easter Monday</b>	we 18	sa 18
tu 19 <b>Start of lectures</b>	th 19	su 19
we 20	fr 20	mo 20
th 21	sa 21	tu 21
fr 22	su 22	we 22
sa 23	mo 23	th 23
su 24	tu 24	fr 24
mo 25	we 25	sa 25
tu 26	th 26 <b>Ascension</b>	su 26
we 27	fr 27	mo 27
th 28	sa 28	tu 28
fr 29	su 29	we 29
sa 30	mo 30	th 30
	tu 31	

july

august

september

fr 1	mo 1	th 1
sa 2	tu 2	fr 2
su 3	we 3	sa 3
mo 4	th 4	su 4
tu 5	fr 5	mo 5
we 6	sa 6	tu 6
th 7	su 7	we 7
fr 8	mo 8	th 8
sa 9	tu 9	fr 9
su 10	we 10	sa 10
mo 11	th 11	su 11
tu 12	fr 12	mo 12
we 13	sa 13	tu 13
th 14	su 14	we 14
fr 15 re-registration Winter Semester	mo 15 re-registration deadline Winter Semester	th 15
sa 16	tu 16	fr 16
su 17	we 17	sa 17
mo 18	th 18	su 18
tu 19	fr 19	mo 19
we 20	sa 20	tu 20
th 21	su 21	we 21
fr 22 End of lectures	mo 22	th 22
sa 23	tu 23	fr 23
su 24	we 24	sa 24
mo 25	th 25	su 25
tu 26	fr 26	mo 26
we 27	sa 27	tu 27
th 28	su 28	we 28
fr 29	mo 29	th 29
sa 30	tu 30	fr 30 End of Summer Semester
su 31	we 31	

Time	Monday	Tuesday
I. Block 8.00 - 9.30 Uhr		
II. Block 9.45 - 11.15 Uhr		
III. Block 11.30 - 13.00 Uhr		
IV. Block 14.00 - 15.30 Uhr		
V. Block 15.45 - 17.15 Uhr		
VI. Block 17:30 – 19:00 Uhr		
VII. Block 19:15 – 20:45 Uhr		



Time	Monday	Tuesday
I. Block 8.00 - 9.30 Uhr		
II. Block 9.45 - 11.15 Uhr		
III. Block 11.30 - 13.00 Uhr		
IV. Block 14.00 - 15.30 Uhr		
V. Block 15.45 - 17.15 Uhr		
VI. Block 17:30 – 19:00 Uhr		
VII. Block 19:15 – 20:45 Uhr		

---

Wednesday	Thursday	Friday

Hey Moin, aus dem

# neusi's

## the place to be!

Café | Food + Drinks | Biergarten  
Bike Repair | Workshops | Events



Direkt nebenan, bei der Haltestelle Hochschule  
an der Langemarckstraße - schaut vorbei!







**Studenten\*innen-Vorteile:**  
10% Rabatt auf alle Getränke\*  
Gratis Lastenräder\*  
\*gegen Vorlage des Studenten\*innen-Ausweis



## Das neusi's – ein 'Melting pot'!

Alle sind willkommen – zum Verweilen und genießen, in herzlicher Atmosphäre.

Inspiziert und beflügelt von gepflegten Sounds und einem besonderen Cyclestyle, ist das neusi's ein Ort, an dem die unterschiedlichsten Menschen und Kulturen zueinander finden und aus deren Begegnungen stets Neues entsteht.

Dass währenddessen – bei hausgemachten Speisen, Kaffee, Wein oder einem frisch gezapften Bier – auch das Fahrrad repariert wird – einfach zauberhaft!

**Weitere Infos zum Café,  
zu Food + Drinks und zur  
Werkstatt findet ihr unter  
[neusis.de](https://www.neusis.de)**



**neusi's**

Bike Repair-Café  
Langemarckstr. 116  
28199 Bremen

## october overview 2021

---

fr 1
sa 2
su 3
mo 4
tu 5
we 6
th 7
fr 8
sa 9
su 10
mo 11
tu 12
we 13
th 14
fr 15
sa 16
su 17
mo 18
tu 19
we 20
th 21
fr 22
sa 23
su 24
mo 25
tu 26
we 27
th 28
fr 29
sa 30
su 31

notes:

---

---

---

---

---

---

---

---

---

---

---

---

---

---

---

---

monthly to-do list:

\*  
.....

\*  
.....

\*  
.....

\*  
.....

\*  
.....

\*  
.....

\*  
.....

\*  
.....

\*  
.....

\*  
.....

\*  
.....

\*  
.....

27.09

Monday

28.09

Tuesday

29.09

Wednesday

30.09		Thursday	
01.10		Friday	
02.10	Saturday	03.10	Sunday

04.10

Monday

05.10

Tuesday

06.10

Wednesday

07.10		Thursday	
08.10		Friday	
09.10	Saturday	10.10	Sunday

11.10

Monday

12.10

Tuesday

13.10

Wednesday



14.10		Thursday	
15.10		Friday	
16.10	Saturday	17.10	Sunday

18.10

Monday

19.10

Tuesday

20.10

Wednesday

21.10		Thursday	
22.10		Friday	
23.10	Saturday	24.10	Sunday

25.10

Monday

26.10

Tuesday

27.10

Wednesday

28.10		Thursday	
29.10		Friday	
30.10	Saturday	31.10	Sunday

# The HSB

*The HSB's studies are conducted at five locations:*

1. Neustadtswall 30
2. Werderstraße 73
3. ZIMT - Flughafenallee 10
4. International Graduate Center
5. Am Brill 2 - 4

*There are five faculties at the HSB:*

1. Economic sciences
2. Architecture, construction,  
environment
3. Social sciences
4. Electronics and computer science
5. Nature and technology

---

# Mission statement of the HSB

What does the HSB stand for?

Since 2018, the Bremen University of Applied Sciences has had a new mission statement. In nine chapters, it was written to express what the HSB stands for and what it strives for. According to the rectorate, the mission statement is a compass that guides the university's actions and articulates an obligation for the daily interaction between members of the university.

This philosophy defines, for example, the guidelines according to which studies and teaching should be structured and the values according to which the university is oriented.

The Bremen University of Applied Sciences describes itself as a place that ensures the freedom of teaching, learning and research within the framework of an understanding of scientifically based, democratic principles. All members of the University are committed to the spirit of enlightenment, honesty, openness, and tolerance in their professional and personal actions. In their actions they are bound by fundamental moral standards. Studies, teaching and research serve exclusively peaceful purposes.

Furthermore, the University is committed to the goals of a humane, free, fair and democratic society, as well as an enlightened and tolerant social climate.

It strives to achieve gender equality and the elimination and prevention of all discrimination. The promotion of diversity is as much an objective as international understanding. All in all, the university strives to be a place of sustainability, cosmopolitanism, rich perspectives, inspiration and reliability.

# The house is burning!

The Science Plan 2025 planned to increase the science budget from 350 million euros in 2019 to 540 million euros by 2025. The goal was to catch up with the nationwide standard. However, this did not happen!

The Senate wanted to cut this. However, due to protests from the universities, the senate has already backed away from this idea. This is however only a partial success, because the planned budget increases are not to take place nevertheless!

The universities and colleges have calculated and planned with this money. Accordingly, specialized personnel were hired, teaching rooms were digitalized, etc.

Now they are stuck with these costs and the staff fear for their jobs. This must not happen! We must continue to protest and exert pressure! Education is our basic right and it should never be saved! Watch out for mails from AStA for more info regarding future actions....)



---

## Bremen's university law

You can obtain a copy of Bremen's university law (BremHG) on the website of the Senatorial Authority for Education and Science. Since it directly affects you as a student, you should take a look at sections relevant to you. (Since you will probably have to deal with the legal basis of your studies, it certainly won't hurt).



## november overview 2021

---

mo 1
tu 2
we 3
th 4
fr 5
sa 6
su 7
mo 8
tu 9
we 10
th 11
fr 12
sa 13
su 14
mo 15
tu 16
we 17
th 18
fr 19
sa 20
su 21
mo 22
tu 23
we 24
th 25
fr 26
sa 27
su 28
mo 29
tu 30

notes:

---



---



---



---



---



---



---



---



---



---



---



---



---



---



---



---



---

monthly to-do list:

- \*  
.....
- \*  
.....
- \*  
.....
- \*  
.....
- \*  
.....
- \*  
.....
- \*  
.....
- \*  
.....
- \*  
.....
- \*  
.....
- \*  
.....
- \*  
.....
- \*  
.....
- \*  
.....
- \*  
.....
- \*  
.....

01.11

Monday

02.11

Tuesday

03.11

Wednesday

04.11		Thursday	
05.11		Friday	
06.11	Saturday	07.11	Sunday

08.11

Monday

09.11

Tuesday

10.11

Wednesday

11.11		Thursday	
12.11		Friday	
13.11	Saturday	14.11	Sunday

15.11

Monday

16.11

Tuesday

17.11

Wednesday



18.11		Thursday	
19.11		Friday	
20.11	Saturday	21.11	Sunday

22.11

Monday

23.11

Tuesday

24.11

Wednesday

25.11		Thursday	
26.11		Friday	
27.11	Saturday	28.11	Sunday



*The semester documents  
sent to you by post contain:*

- Student ID card
- Semesterticket
- Matriculation certificate
- BaföG certificate
- Information on the semester fee for re-registering for the following semester

---

## Semester documents

In order for your documents to be sent to you each semester, the Matriculation Office must always have your current address!

You should always carry your student ID card/your semesterticket on you. Please note: Your student ID card is not a substitute for your ticket. If you do not carry your semester ticket with you when you have your ticket checked, you will have to present your ticket at the customer service department of the public transport authority and usually pay a processing fee of about 7€.

You can get discounts and favourable conditions at many institutions with your HS Bremen student ID card. These are usually only available when you can present proof of studentship, so it's always worth carrying your student ID with you. However, it is only valid in combination with an ID or driving licence.

You can also obtain an International Student Identity Card (ISIC) from the AStA (bring your identity card/passport, semester ticket, student ID and passport photo). It costs 15 € and is valid for one year starting the date of issue. With the ISIC you can get discounts worldwide, e.g. in museums, art galleries, exhibitions or tourist attractions.

The Bafög certificate must be submitted with any Bafög application. You will need the matriculation certificate as proof of various formalities, such as health insurance.



# Timetable

It is often said that the timetable at a university of applied sciences is very reminiscent of school, and you are absolutely right in thinking so! The heads of the degree programmes draw up a timetable for each study programme in every semester, which is designed to ensure that your studies run smoothly. Normally, courses at the HSB take place in a 5-day week from Monday to Friday.

Courses at the university are being conducted in timeslots. One slot lasts 90 minutes. The first slot begins at 8 am and the last block ends at 6.30 pm or 7 pm, depending on the length of the lunch break. The length of the lunch break varies from one degree programme to the next, usually lasting either from 13:00 to 13:30 or 13:00. to 14:00 Details or deviations can be found in your timetable.

**ATTENTION:** Even in an online semester, your webinars run according to a regular timetable and are not being recorded or made available for later viewing.

---

## Registration for courses/exams

In the Bachelor's and Master's programmes, courses are offered in modular form. You can register for 5 modules per semester. In individual cases, it is possible to register for additional modules. Important: Registration is crucial for participation in the courses! These are also the registrations for the exams. From the beginning of lectures you have 3 weeks to register for the modules and exams in your semester. You can withdraw your registration up to 3 weeks before the start of the exams. You can register and deregister in the QIS portal of the Matriculation and Examination Office. There you will also find an overview of the modules you have registered for as well as your grades.



# Aulis

AULIS is the eLearning portal of the HSB. All students get personal access. Lecturers can use AULIS to provide materials and information (news, scripts, lecture notes, audio and video material, presentations, etc.) to complement their courses.

On AULIS you can manage your learning opportunities as well as contact any member of HS Bremen. It is also possible to create discussion forums for groups, start surveys and more. If you have any questions about AULIS you can send an email to [aulis@hs-bremen.de](mailto:aulis@hs-bremen.de). The mails sent on AULIS can also be forwarded to your stud.-mail address at the university, so you can always be up to date.

# stud.-mailadress

All students receive an email address with their matriculation at the HSB, the so-called Stud-mail. Even if you already have a private email address, you should regularly check the emails sent to this address. To simplify matters, you can set up a redirection function so that all emails are forwarded to your private email address. Here's how it works:





---

# Semester fee

2 months before the start of each semester, you will have to pay the semester fee to re-register for the next semester. The deadlines for the next two semesters can be found in the year review. You can check the fee on [campino.hs-bremen.de](http://campino.hs-bremen.de) or you can find it on the university's homepage. In recent years, the semester fee has unfortunately increased every year, mostly due to the rising price of the semester ticket. The semester fee is currently **374,66€**.

## **BREAKDOWN OF COSTS:**

### **225,81€ semester ticket**

(You can find information about the benefits of the Semesterticket in the section „Semesterticket“.)

### **50€ administration fee**

85€ go to the Studierendenwerk  
(Operation of the dining halls, the dormitories and other services of the Studierendenwerk are financed with this money)

### **1,85€ go to the „Kultursemesterticket“**

(More information on this can be found in the section “Surviving and living in Bremen - Culture and Leisure”)

### **12 € go to the AStA of the HSB**

(used to finance the organisation of the student body. It should be mentioned that the AStA members are volunteers and receive no monetary compensation.)

## december overview 2021

---

we 1
th 2
fr 3
sa 4
su 5
mo 6
tu 7
we 8
th 9
fr 10
sa 11
su 12
mo 13
tu 14
we 15
th 16
fr 17
sa 18
su 19
mo 20
tu 21
we 22
th 23
fr 24
sa 25
su 26
mo 27
tu 28
we 29
th 30
fr 31

notes:

---

---

---

---

---

---

---

---

---

---

---

---

---

---

---

---

---

---

monthly to-do list:

\*  
.....

\*  
.....

\*  
.....

\*  
.....

\*  
.....

\*  
.....

\*  
.....

\*  
.....

\*  
.....

\*  
.....

\*  
.....

\*  
.....

\*  
.....

29.11

Monday

30.11

Tuesday

01.12

Wednesday

02.12		Thursday	
03.12		Friday	
04.12	Saturday	05.12	Sunday

06.12

Monday

07.12

Tuesday

08.12

Wednesday

09.12		Thursday	
10.12		Friday	
11.12	Saturday	12.12	Sunday

13.12

Monday

14.12

Tuesday

15.12

Wednesday



16.12		Thursday	
17.12		Friday	
18.12	Saturday	19.12	Sunday

20.12

Monday

21.12

Tuesday

22.12

Wednesday

23.12		Thursday	
24.12		Friday	
25.12	Saturday	26.12	Sunday

27.12

Monday

28.12

Tuesday

29.12

Wednesday

30.12		Thursday	
31.12		Friday	
01.01	Saturday	02.01	Sunday

## The „Semesterticket“

You will receive the semesterticket with your semester documents from the Matriculation Office. You will also have to contact the Matriculation Office if you have lost your semester ticket and need a new one (15€ fee). In this case, you have to submit a sworn statement, that you did not simply sell the ticket.

The Semesterticket is a personal ticket for students, which is only valid with a photo and in connection with your ID (or an adequate substitute) for each semester.

Please note: The student ID card is not a substitute at ticket checks. If you don't carry your semester ticket with you when being checked, you will have to present your ticket at the customer service of the public transport authority and usually pay a processing fee of roughly 7€.








*For more than two years, the AstA has been fighting for socially acceptable prices for the semester ticket, in an alliance with students from the VBN area. Our main criticism is directed at the Verkehrsverbund Bremen/Niedersachsen (VBN). For years there has been no concession on their part. We want to take action against price increases and continue to campaign for them..*

### 3. The "Semesterticket"

## Scope of the bremer semester tickets:



#### Legende

-  Geltungsbereich Landesweites Semesterticket Niedersachsen/Bremen
-  Landesweites Semesterticket Niedersachsen/Bremen gilt zusätzlich im Fernverkehr (IC/EC) zwischen Bremen Hbf und Norddeich Mole/Emden Außenhafen
-  **Münster** Beispiel für die erste/letzte gültige Haltestation für das Landesweite Semesterticket Niedersachsen/Bremen

Die Karte ist vereinfacht dargestellt und bildet nicht alle Bahnhöfe im Geltungsbereich ab. Die dargestellten Bahnhöfe dienen der Orientierung, der Geltungsbereich erstreckt sich auf alle Bahnhöfe entlang der eingezeichneten Linien.





## january overview 2022

---

sa	1
su	2
mo	3
tu	4
we	5
th	6
fr	7
sa	8
su	9
mo	10
tu	11
we	12
th	13
fr	14
sa	15
su	16
mo	17
tu	18
we	19
th	20
fr	21
sa	22
su	23
mo	24
tu	25
we	26
th	27
fr	28
sa	29
su	30
mo	31

notes:

---

---

---

---

---

---

---

---

---

---

---

---

---

---

---

---

monthly to-do list:

\*  
.....

\*  
.....

\*  
.....

\*  
.....

\*  
.....

\*  
.....

\*  
.....

\*  
.....

\*  
.....

\*  
.....

\*  
.....

03.01

Monday

04.01

Tuesday

05.01

Wednesday

06.01		Thursday	
07.01		Friday	
08.01	Saturday	09.01	Sunday

10.01

Monday

11.01

Tuesday

12.01

Wednesday

13.01		Thursday	
14.01		Friday	
15.01	Saturday	16.01	Sunday

17.01

Monday

18.01

Tuesday

19.01

Wednesday



20.01		Thursday	
21.01		Friday	
22.01	Saturday	23.01	Sunday

24.01

Monday

25.01

Tuesday

26.01

Wednesday

27.01		Thursday	
28.01		Friday	
29.01	Saturday	30.01	Sunday

## february overview 2022

---

tu	1
we	2
th	3
fr	4
sa	5
su	6
mo	7
tu	8
we	9
th	10
fr	11
sa	12
su	13
mo	14
tu	15
we	16
th	17
fr	18
sa	19
su	20
mo	21
tu	22
we	23
th	24
fr	25
sa	26
su	27
mo	28

notes:

---

---

---

---

---

---

---

---

---

---

---

---

---

---

---

---

---

---

---

monthly to-do list:

- \*  
.....
- \*  
.....
- \*  
.....
- \*  
.....
- \*  
.....
- \*  
.....
- \*  
.....
- \*  
.....
- \*  
.....
- \*  
.....
- \*  
.....
- \*  
.....
- \*  
.....

31.01

Monday

01.02

Tuesday

02.02

Wednesday

03.02		Thursday			
04.02		Friday			
05.02		Saturday	06.02		Sunday

07.02

Monday

08.02

Tuesday

09.02

Wednesday



10.02		Thursday	
11.02		Friday	
12.02	Saturday	13.02	Sunday

14.02

Monday

15.02

Tuesday

16.02

Wednesday

17.02		Thursday	
18.02		Friday	
19.02	Saturday	20.02	Sunday

21.02

Monday

22.02

Tuesday

23.02

Wednesday

24.02		Thursday	
25.02		Friday	
26.02	Saturday	27.02	Sunday

# BAföG

BAföG (Bundesausbildungsförderungsgesetz) is a governmentally funded financial aid program for students. One half is paid as a grant, the other half as a loan, which adds up to a maximum of €10,010 and is reclaimed in instalments 5 years after the end of the maximum funding period. Whether you receive BAföG and the amount thereof depends on your personal circumstances. For example, whether you live alone or with your parents, how much your parents earn, whether you have siblings who are also in training, etc. The maximum BAföG rate ranges from 592€ for students who live with their parents to a maximum of €861 for students over 25 with compulsory insurance and their own household. For stays abroad, there are additional charges for arrival and departure, health insurance and possibly tuition fees. Don't be put off by all the paperwork, but take advantage of the independent BAföG and social counselling provided by the AStA for free! Normally there are 3 locations (Neustadtswall, Werderstr. and ZIMT) to get help and advice. As the university is still closed due to covid-19 you can only reach the counselling centres by email for now. However, they will be happy to call you back. Also, the AStA is currently working on opening the counselling to visitors again, just keep looking on our homepage. If the infection rate allows it consultations will take place in person again starting in November.



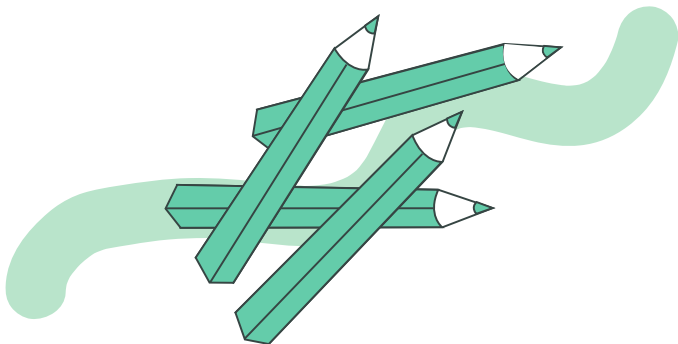
---

## BAföG- & Sozialberatung

The BAföG and social counseling is available to all students of the Bremen University of Applied Sciences free of charge. Due to developments, the BAföG and social counseling offices at all locations are also closed for personal counseling until further notice. However, you can still reach them by e-mail and they will be happy to call you back if necessary. Here you can get comprehensive advice on BAföG, international BAföG, student loans, questions about study places and many other questions about studying. Additionally: On Wednesdays at the Neustadtswall location, you can also get advice on rent and housing matters. This counseling takes place in cooperation with the ASTa of the University of Bremen.

**[bafog-beratung@hs-bremen.de](mailto:bafog-beratung@hs-bremen.de)**

All inquiries and conversations are treated strictly confidentially. The BAföG and social counseling is part of the ASTa and therefore completely independent of the Studentenwerk.



## Student loans

The main creditors in Germany:

Kreditanstalt für den Wiederaufbau (KfW)

Up to 650,-€ monthly as an interest-bearing loan.

Further information:



Bildungskredit vom Bundesverwaltungsamt (BVA) für fortgeschrittene Studierende education loan: 100 - 300 €, interest rate (effective) lower than 1%





---

# Scholarships

..If you are looking for scholarships, it's worth taking a look at the scholarship guide's database, which allows you to make a targeted search:



..There are also numerous other scholarships such as the Deutschlandstipendium



..and ERASMUS.



## march overview 2022

---

tu	1
we	2
th	3
fr	4
sa	5
su	6
mo	7
tu	8
we	9
th	10
fr	11
sa	12
su	13
mo	14
tu	15
we	16
th	17
fr	18
sa	19
su	20
mo	21
tu	22
we	23
th	24
fr	25
sa	26
su	27
mo	28
tu	29
we	30
th	31



28.02

Monday

01.03

Tuesday

02.03

Wednesday

03.03		Thursday	
04.03		Friday	
05.03	Saturday	06.03	Sunday

07.03

Monday

08.03

Tuesday

09.03

Wednesday

10.03		Thursday	
11.03		Friday	
12.03	Saturday	13.03	Sunday

14.03

Monday

15.03

Tuesday

16.03

Wednesday



17.03		Thursday	
18.03		Friday	
19.03	Saturday	20.03	Sunday

21.03

Monday

22.03

Tuesday

23.03

Wednesday

24.03		Thursday	
25.03		Friday	
26.03	Saturday	27.03	Sunday

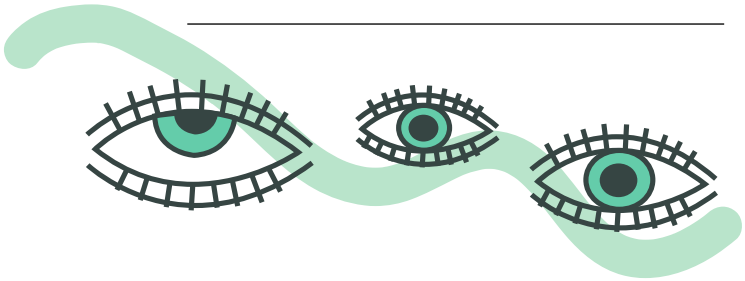
# The student body

We students want to actively participate in shaping the development of our university. We have established a democratic structure to effectively represent our interests. All students have the opportunity to participate..

## Tasks of Student body

The student body directly and indirectly elects the representatives in the student committees, as well as the student representation in the university committees. In university committees, the relationship of seats is regulated by the university law, in such a way that professors (almost) always hold the majority of the seats.

Nevertheless, you are not the representatives of the university, the professors, the Rectorate, the department or any other entity. You are solely the representative of the students who elected you. If you sit in a committee, you must face your professors, the people who evaluate you in your academic career. This is no easy task. But it is still worth the effort: we can achieve a lot through persistence cooperation and commitment. No lecture can give you the experience that is being a student representative.



## Statutes of the student body

The most important statute of the student body is our basic order, as it affects us all. The preamble:

*„The higher education sector is part of the society of the Federal Republic of Germany and should not be seen independently from it. Within the framework of its statutory duties, the student body shall support the social and democratic development of the Federal Republic of Germany and the safeguarding of peace. Conscious of their responsibility to society, the student body is obligated to actively participate in shaping university life and to exercise their democratic rights.“*

The entire statute can be found here:



## april overview 2022

---

fr	1
sa	2
su	3
mo	4
tu	5
we	6
th	7
fr	8
sa	9
su	10
mo	11
tu	12
we	13
th	14
fr	15
sa	16
su	17
mo	18
tu	19
we	20
th	21
fr	22
sa	23
su	24
mo	25
tu	26
we	27
th	28
fr	29
sa	30

notes:

---

---

---

---

---

---

---

---

---

---

---

---

---

---

---

---

---

---

---

---

---

---

---

---

monthly to-do list:

\*  
.....

\*  
.....

\*  
.....

\*  
.....

\*  
.....

\*  
.....

\*  
.....

\*  
.....

\*  
.....

\*  
.....

\*  
.....

\*  
.....

\*  
.....

28.03

Monday

29.03

Tuesday

30.03

Wednesday



31.03		Thursday	
01.04		Friday	
02.04	Saturday	03.04	Sunday

04.04

Monday

05.04

Tuesday

06.04

Wednesday

07.04		Thursday	
08.04		Friday	
09.04	Saturday	10.04	Sunday

11.04

Monday

12.04

Tuesday

13.04

Wednesday

14.04		Thursday	
15.04		Friday	
16.04	Saturday	17.04	Sunday

18.04

Monday

19.04

Tuesday

20.04

Wednesday

21.04		Thursday	
22.04		Friday	
23.04	Saturday	24.04	Sunday

25.04

Monday

26.04

Tuesday

27.04

Wednesday



28.04		Thursday	
29.04		Friday	
30.04	Saturday	01.05	Sunday

# AStA, SR & Co.

There is a committee timeslot for committee work in each department. This time is reserved for committee work and no courses may take place at that time.

Committee work is important for representing the interests of the students, and there are plenty of reasons to participate: committee work is not only a personal challenge, but you also get to know many people. You acquire many skills for your later professional life. Of course, the work also adds a new line to your CV.

If you would like to get involved, you can get information about it directly from your Fachschaft and the AStA. There is always room for active people who represent the interests of the student body, especially since studies at the university are usually interrupted by practical semesters and semesters abroad. Of course you can also support the AStA and your student body in various projects without being formally elected. Just drop by and see for yourself how the student representatives work.

You can find out the dates for university committee meetings from the AStA or from the Fachschaften in the individual faculties. Meetings are open to the public, so you can take a look at all meetings if you are interested. Invitations and dates of the meetings can be found on the AStA website.

**WE APPRECIATE YOUR ENGAGEMENT!**



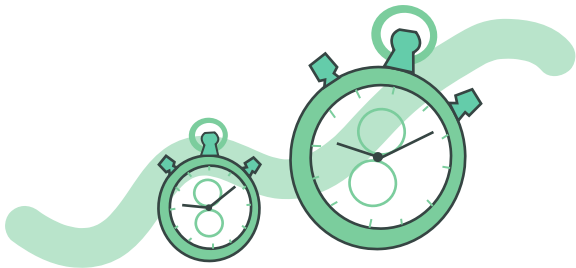
---

## Committee coordination

The committee coordinator cooperates with all student committees across all departments. He supports and advises the various committees regarding their work and regularly invites them to networking meetings. In addition to his advisory activities, he is also actively involved in the committee's activities.

If you have questions about the student committees, want to get involved, are interested in working in the committees and groups or simply want to know how the student elections work, you can contact the committee coordinator.

**Marc Renken**  
Neustadtswall 30 (Raum M05)  
28199 Bremen  
**Tel. 0421 5905 - 3642**  
**[gremien@hs-bremen.de](mailto:gremien@hs-bremen.de)**



# Student Council (SR)

The Student Council (SR) is the student parliament of our university and thus the highest body of student self-administration. The 25 seats in the SR are directly elected by the students every year. All matriculated students can stand for election. It is also possible to stand for election as a list: A list is a group of students who have similar goals and views regarding the work in the SR.

The SR meets in regular sessions, which are also open to non-members, and is responsible for the statutes of the student body, among other things. The SR elects the AStA members, the Commission for Cases of Hardship (HäFK), which decides on the exemption of semester ticket fees for financially disadvantaged students, the Election Committee and the Electoral Examination Committee for the organisation of the student council and student body elections. In addition, the SR elects the student representatives for the administrative board of the Studierendenwerk, decides on the student budget and on the semesterticket.

Like many other student bodies, the SR lives from the active cooperation of the student body, without which the interests of the students cannot be adequately represented. Your ideas can improve networking between the faculties, enable the introduction of interdisciplinary courses and make life as a student a little bit more enjoyable.



### **CONTACT: .**

The current presidency of a legislative period.

Mr. Tobias Eichner

E-Mail: [studierendenrat@hs-bremen.de](mailto:studierendenrat@hs-bremen.de)

---

## general Student committee (AStA)

The AStA is the inter-faculty representation of students' interests and consists of a three-member board of directors and the consultants for:

1. University politics
2. Public relations
3. Social issues
4. politics and society
5. environment
6. equality
7. communication
8. culture
9. student affairs

In its work, the AStA also debates with political officials in Bremen and seeks to influence political processes. The AStA also participates in strikes and rallies, such as the rally for the 2021 Solidarity Semester. Where representatives of the university do not have the courage to resist, it is often only the AStA who represents the interests of the students. In addition to these public campaigns, which are visible to all, the AStA also shapes everyday life at the university and is, for example, also the publisher of this calendar.

AStA members regularly take part in sessions of the university committees and work together with other student representations, such as the “Fachschaften”. The AStA manages the finances of the student body and conducts various administrative services, such as reimbursement of semester tickets or the International Student Identity Card. In addition, the AStA finances a free, neutral and independent BAföG counselling service and social counselling service which are available to all students with questions or problems.

You can work for the AStA, even if you do not have a mandate. The work in the AStA is honorary and therefore not paid. The sessions of the AStA are open to the public, and the dates can be viewed on our homepage. Since we cannot meet in person right now, our meetings are conducted online.

### **WE ARE GLAD ABOUT EVERY MESSAGE OR VISIT!**

If you have any questions, you can reach us via Email:  
**asta@hs-bremen.de**

Mr. Jerome Geisinger, 2nd Asta- Chairman  
asta-vorstand@hs-bremen.de

After arranging an appointment with us, we can also meet  
in person  
In Room 6a-10



---

# Psychological counseling centers

The Corona Virus has affected all of us in our way of life, be it existential anxiety or general mental issues. Therefore, we would like to refer to our Psychological Counseling Service (PBS). This is available to all students at Bremen's universities to offer support with personal and study-related problems.

You can make use of the counseling service at any time, free of charge and without bureaucracy. Of course, all staff members are bound to professional secrecy.

contact:

Secretary's office

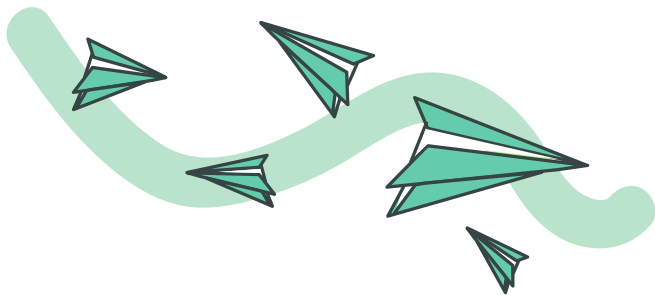
Miss Intemann

Phone: +49 421 22 01 113 10

office hours: Monday, Tuesday, Thursday, Friday: 9 am until 1 pm

Wednesday: 2 - 4 pm





# Student Council

A Fachschaft is the representation of all students of a given faculty. There is one Fachschaft per faculty. Each Fachschaft consists of five members directly elected by you. They are your representatives and in this function have the task of conducting meetings on your behalf, for example, with professors and administrative employees.

**Each student council is able to form committees for a specific degree programme.**



## Student Council 1

Dear students,  
we are your Fachschaft 1 of the Faculty of Economics and Business Administration. We are happy to be there for you as your student representatives in all matters, to support you and help where we can. During the pandemic you can contact the Fachschaft by email: [fachschaft1@hs-bremen.de](mailto:fachschaft1@hs-bremen.de)

We wish you a great start to the semester and are glad to assist you.

Your Student Council 1



## Student Council 2

Hi, we are the Student Council 2!

In other words, if you architects, construction engineers and environmental engineers have problems and critique to express towards the university, please contact us. We represent your interests talking to university management. And if you want to plan a party, we would be happy to assist you. At the moment, you can only contact us at [fachschaft2@hs-bremen.de](mailto:fachschaft2@hs-bremen.de). Hopefully, we'll see you in the AB building, room 813 sometime soon.

### Student Council 3

Hello students of Faculty 3, Social Sciences!

We are the Fachschaft 3, your elected student representatives in study-related matters. Our goal is open communication between students, lecturers and university representatives within the faculty. We would like to invite you to bring in your ideas and participate in projects. You can contact us at [fachschaft3@hs-bremen.de](mailto:fachschaft3@hs-bremen.de) with your requests, concerns or suggestions. If the hygiene regulations allow it, we will also be happy to organise events (lectures, parties, etc.) and meet in room SI 253, regularly. Your Fachschaft 3

**E-Mail:** [Fachschaft3@hs-bremen.de](mailto:Fachschaft3@hs-bremen.de)

### Student Council 4

**E-Mail:** [fachschaft4@hs-bremen.de](mailto:fachschaft4@hs-bremen.de)



## Student Council 5

We from the Student Council 5 have the task of representing you and your interests. Aside from the many student projects we support, we also discuss university politics and the work of the student council committees (FSA). In a nutshell, we try to implement your ideas and suggestions and to improve life and studying at the HSB. You are welcome to come up with new ideas, projects or critique. You can visit us in our student council room M208 during our meetings, which are always open to the public. The upcoming dates and projects are published on the student councils' website. Alternatively, you can simply send us an email:

[fachschaft5@hs-bremen.de](mailto:fachschaft5@hs-bremen.de)

**Best regards and a good start to your studies,**

su	1
mo	2
tu	3
we	4
th	5
fr	6
sa	7
su	8
mo	9
tu	10
we	11
th	12
fr	13
sa	14
su	15
mo	16
tu	17
we	18
th	19
fr	20
sa	21
su	22
mo	23
tu	24
we	25
th	26
fr	27
sa	28
su	29
mo	30
tu	31

notes:

---

---

---

---

---

---

---

---

---

---

---

---

---

---

---

---

---

---

monthly to-do list:

\* .....

\* .....

\* .....

\* .....

\* .....

\* .....

\* .....

\* .....

\* .....

\* .....

\* .....

\* .....

\* .....

02.05

Monday

03.05

Tuesday

04.05

Wednesday

05.05		Thursday	
06.05		Friday	
07.05	Saturday	08.05	Sunday

09.05

Monday

10.05

Tuesday

11.05

Wednesday



12.05		Thursday	
13.05		Friday	
14.05	Saturday	15.05	Sunday

16.05

Monday

17.05

Tuesday

18.05

Wednesday

19.05		Thursday	
20.05		Friday	
21.05	Saturday	22.05	Sunday

23.05

Monday

24.05

Tuesday

25.05

Wednesday

26.05		Thursday	
27.05		Friday	
28.05	Saturday	29.05	Sunday

# Elections

Once a year, usually in December, elections take place at the HSB. All students are asked to cast their votes and elect their student representatives and the student council.

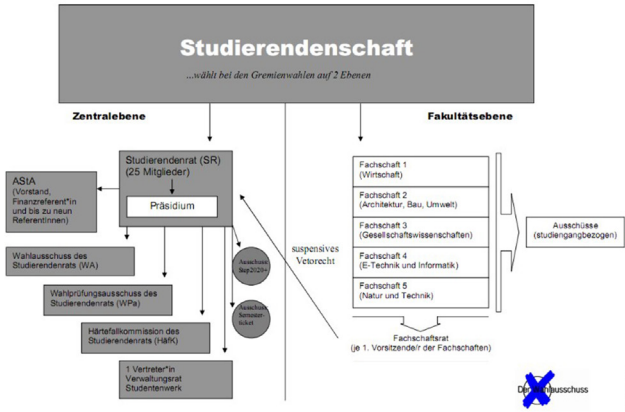
The Student Council (SR) is the highest elected active representation of the students. For example, it elects the AStA, decides on the student budget or votes on the semester ticket.

The Fachschaften (FS) are the student representatives at faculty level. They are the go-to people concerning problems within the degree programme and they organise freshman events, Christmas parties, etc. They are also often involved in inter-faculty projects and events.

A few weeks before the election, all students receive an email from the election committee. It contains information on and where the election will take place. You can also find out how to run for one of the committees yourself. By the way, all students at the university are eligible to run for election. First-year students in particular are invited to stand as candidates in order to actively shape their own future study environment.

The term of office begins with the summer semester and lasts one year.

## Struktur der Studierendenvertretung der studentischen Selbstverwaltung



If you have any questions about the committees or the elections, you can contact the ASiA, the committee coordinator or your Fachschaft.

*Info: simultaneously o the student committee elections, the university committees (Academic Senate and Faculty Councils) are elected. Students elect their representatives within the university committees and can also stand for election themselves. Please refer to the emails from the university. Further information on the student committee elections can be found here:*



## june overview 2022

---

we	1
th	2
fr	3
sa	4
su	5
mo	6
tu	7
we	8
th	9
fr	10
sa	11
su	12
mo	13
tu	14
we	15
th	16
fr	17
sa	18
su	19
mo	20
tu	21
we	22
th	23
fr	24
sa	25
su	26
mo	27
tu	28
we	29
th	30





30.05

Monday

31.05

Tuesday

01.06

Wednesday

02.06		Thursday		
03.06		Friday		
04.06		Saturday	05.06	Sunday

06.06

Monday

07.06

Tuesday

08.06

Wednesday

09.06		Thursday	
10.06		Friday	
11.06	Saturday	12.06	Sunday

13.06

Monday

14.06

Tuesday

15.06

Wednesday

16.06		Thursday	
17.06		Friday	
18.06	Saturday	19.06	Sunday

20.06

Monday

21.06

Tuesday

22.06

Wednesday



23.06		Thursday	
24.06		Friday	
25.06	Saturday	26.06	Sunday

### Culture and leisure

Leisure time and cultural activities suffer strongly from the restrictions of the corona pandemic. Nevertheless, we want to give you a small overview of possible cultural offers, in order to be able to use them in the near future. In the following we are going to list cultural offers that are usually taking place in Bremen.

Bremen has a diverse theater scene. The Bremen Shakespeare Company stages Shakespeare in the Park once a year at the end of July/beginning of August. The museum landscape in Bremen is equally diverse. For example, there is the Überseemuseum right next to the zentral train station, or for those who like more modern things, the Universum Science Center near the university. A trip to Bremerhaven is also worthwhile, here the German Maritime Museum, the „Klimahaus“ and the „Auswandererhaus“ are located in close proximity to each other.

The Kultursemesterticket allows free or greatly reduced admission to numerous institutions and independent artists. You have already paid for it in your semester fee (1.85 euros). If you scan the QR code to the right of the text, you will get to the current offer, which you can use with the „Kultursemesterticket“.



---

On cozy winter evenings, you can go to the movies. In addition to the large cinemas CinemaxX, Cinespace and CineStar, there are a number of movie theaters such as the Schauburg or the City 46, which also show films outside the mainstream.

You can inform yourself about current offers on the website of [mix-online.de](http://mix-online.de).

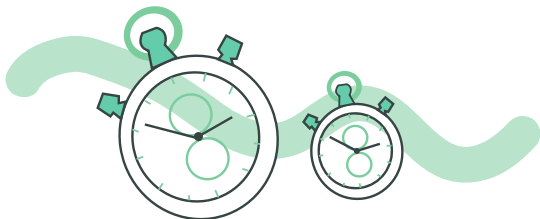
Bremen also has a lot to offer culturally. In June/July, the La Strada street circus festival takes place, followed about a month later by the Breminale on the Osterdeich.

In winter, in addition to the traditional Christmas market in the city center, there is also a medieval Advent market („Schlachtezauber“) directly on the „Schlachte“.

Let's talk about going out in Bremen, right next to the HSB you will find the „Modernes“, a club that offers everything from pop to rock. Every last Friday of the month, a 90s party is celebrated here. In the „Viertel“ you can find smaller clubs like the Lila-Eule. Throughout the Steintor are a variety of pubs and bars. There you can also perform the Bremen „baptism“. For that you drink a „Krabbel die Wand hoch“ in the „Eisen“. Right next to it is the famous Arabic snack bar, where you can satisfy your hunger with a delicious rollo.

But there are also nice little pubs all over the city, like the Papp or the Drittel in the Neustadt, or you could visit the Schlachte for a nice beer garden atmosphere. At the Zentral train station is the notorious Discomeile, there you will find something for every taste. However, events and opening hours depend heavily on the current Corona ordinances.





### Mobility

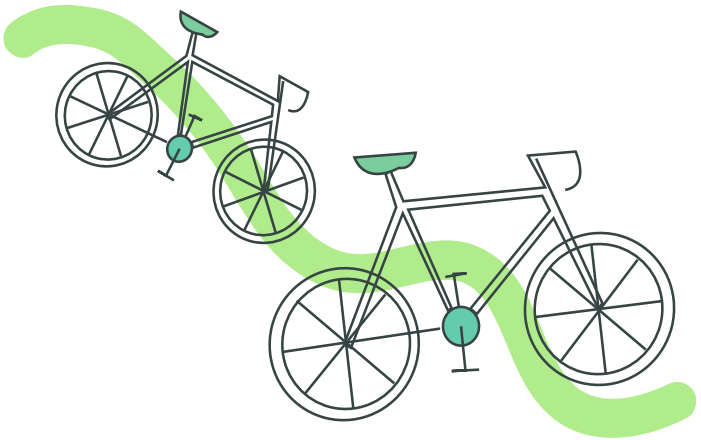
Bremen's public transport network is quite well equipped with trams and buses, which you can use at any time with your semester ticket at no additional charge . You can find more information in the section „Semesterticket ‘. If you are new to northern German cities, you will probably notice a lot of people on bikes . Bicycling is the number one way to get around in Bremen, and it's very easy to get around quickly at any time of the day or night, if you have a bike. If not, simply stroll through the next flea market or stop by the „Fietsenbörse“ on Bürgerweide. If your bike is dear to you, a good lock is worthwhile (otherwise it will soon be on the flea market again). If you don't have a bike, thanks to the cooperation with WK bike you can bike for free up to 30 minutes and every half hour after that for 1 Euro. Scan the QR code for more info:



---

Or you can use the e-scooters distributed throughout Bremen by „tier“ or „voi“. Here you pay a basic fee of one euro and 15 cents per starting minute.

If you come to the university by car, you can park in the company's own parking spaces. A parking space costs €1 per day (€1.30 in the underground garage), which will be charged to your Mensacard. However, it is usually not worthwhile to keep a car as a student in Bremen. An alternative is car sharing as offered by Cambio. There are also extra student rates. You can get out of Bremen by train or long-distance bus. The ZOB is located at the main train station right next to the CinemaxX. From there you can take buses to Groningen, Berlin or the North Sea coast. Take a look at the website of FlixBus or BlaBlaBus.



## july overview 2022

---

fr	1
sa	2
su	3
mo	4
tu	5
we	6
th	7
fr	8
sa	9
su	10
mo	11
tu	12
we	13
th	14
fr	15
sa	16
su	17
mo	18
tu	19
we	20
th	21
fr	22
sa	23
su	24
mo	25
tu	26
we	27
th	28
fr	29
sa	30
su	31



27.06

Monday

28.06

Tuesday

29.06

Wednesday



30.06		Thursday	
01.07		Friday	
02.07	Saturday	03.07	Sunday

04.07

Monday

05.07

Tuesday

06.07

Wednesday

07.07		Thursday	
08.07		Friday	
09.07	Saturday	10.07	Sunday

11.07

Monday

12.07

Tuesday

13.07

Wednesday

14.07		Thursday	
15.07		Friday	
16.07	Saturday	17.07	Sunday

18.07

Monday

19.07

Tuesday

20.07

Wednesday

21.07		Thursday	
22.07		Friday	
23.07	Saturday	24.07	Sunday

25.07

Monday

26.07

Tuesday

27.07

Wednesday



28.07		Thursday	
29.07		Friday	
30.07	Saturday	31.07	Sunday

### Hochschulsport

The Verein für Hochschulsport Bremen e.V. offers a diverse sports programme with many courses for student-friendly prices. The offer goes far beyond the „classic“ sports and is also open to non-students. From A for Aikido to Z for Zumba... it is worthwhile to take a look at the offers. Many individual sports are offered online this semester. Some of the team sports are offered in compliance with hygiene regulations. All new information and developments can be found on the web.

The number of participants for university sport courses are limited, which is why coveted courses are often booked out quickly.

Start of registration for WS 21/22: 04.10.2021, 7.00 am

### Chor „IntoNation“ of the HS Bremen

The choir is open to all singers. Advanced skills or knowledge are not required. You can get more information about this at:



## Theatre Workshop

The Theatre Workshop was established 1999 and is open to students of all faculties regardless of acting experience. Even during the pandemic, we do not meet digitally, but face-to-face - in accordance with hygiene regulations. The project is conceived for the duration of one academic year and will be presented to the public in a series of performances at the end of the work process. Last year, for example, Shakespeare's MACBETH was brought to stage in a modern reinterpretation. The meetings take place weekly on Tuesdays at 19.00 in the library of the HSB Neustadtswall.

For more information click here:



## foreign languages

The Foreign Language Centre of the Universities in the State of Bremen (FZHB) offers courses in almost 20 languages as well as preparation for semesters abroad. You can also obtain internationally recognised language certificates according to your skill level. Self-education is available at the self-study centres (SLZ), where you can learn any language you like autodidactically using learning software.

These are located at Neustadtswall, Werderstraße and the ZIMT (Centre for Information Technology and Media Technology). The FZHB also offers a free tandem coordination service for language learning.

This is a language exchange in which two people with different mother tongues meet regularly to improve their knowledge of the other language.

# AG sustainability

Sustainable (adjective): has a strong effect over a longer period of time. Often you just need to turn tiny screws, to make a large machine work. At the university, for example, we have been working to ensure that the leftover rolls from the cafeteria are delivered to social institutions so they don't end up in the trash. We have also replaced the small sachets of salt and pepper with shakers and we regularly organise flea markets. These are only examples and we are happy about every new idea.

Would you like to take part in projects that are designed to have a long term positive impact? Do you have great ideas and want to contribute to our projects?

Then come and visit us! We are looking forward to meeting you. You can also text us at:

**[ag-nachhaltigkeit@hs-bremen.de](mailto:ag-nachhaltigkeit@hs-bremen.de) or**

**[www.facebook.com/agnachhaltigkeit](https://www.facebook.com/agnachhaltigkeit)**

We now also have an Instagram account! Find us at  
[@ag\\_nachhaltigkeit\\_hsb](https://www.instagram.com/ag_nachhaltigkeit_hsb)

Especially in these trying times, it is important for us to be active and continue to work on our projects...at a distance. Just text us!



## IKUF

Do you like to do honorary work alongside your studies?

Do you like dealing with children, organising or do you simply have a passion for intercultural exchange?

Then it's you we are looking for! :)

We, the working group „IKUF - Integration through culture and leisure“, are students of the Bremen University of Applied Sciences and since 2015 we are working towards the integration of children, adolescents and young adults with a refugee background through activities in the sectors of culture and leisure. Would you like to know more? Then please contact us by e-mail or Instagram!

**E-Mail: [ikuf-bremen@gmx.de](mailto:ikuf-bremen@gmx.de)**

**Instagram: [ikuf\\_bremen](https://www.instagram.com/ikuf_bremen)**

## Portkeys Bremen Quidditch

Quidditch is pure fantasy? Not any more!

For some years now, more and more people have shared our enthusiasm for this fusion of handball, rugby and dodgeball - including a big portion of not taking yourself too seriously. We, the Portkeys Bremen, are welcoming new Players anytime.

More information can be found in the facebook group.

**Quidditch Bremen.**

# Hochschulcup

The range of sports on offer at the HSB can be underwhelming. Although there is a multi-purpose gymnasium at the Werderstraße location, there is a lack of open sports facilities.

That was one of the reasons for running the 1st University Cup more than 10 years ago.

The University Cup is the annual, university-wide indoor football tournament at the HSB. The tournament is organised by the student representations.

The special thing about the University cup: Everyone can take part - students, teachers, staff. Mixed teams are also welcome. The only requirement is that all players must be employed at the HSB.

Up to 16 teams have participated in the University Cup in the past years. This year, the tournament will probably have to be postponed as the current pandemic situation will probably not allow an indoor football tournament with well over 100 players and spectators.

However, postponed does not mean cancelled. If everything works according to plans, there will be an open-air tournament in spring/summer next year and maybe the ball will roll indoors in autumn 2021.

**You will see the posters in the HSB!**



---

## Locale Erasmus Initiative (LEI)

Do you enjoy languages? Are you interested in foreign cultures? Would you like to meet new people or do you like to plan events? Then join us and help offer an unforgettable time to the exchange students of the HSB! We promote intercultural exchange between international and local students and meet about twice a month to plan events that promise excitement and fun. Whether it's an international dinner, a party or our regulars' table - our programme is diverse. Especially due to corona, many new ideas will be considered, and every new idea is welcome!

Please contact us if you are interested and text us:

[lei@hs-bremen.de](mailto:lei@hs-bremen.de)

We are looking forward to you!

Cheers, die LEI!

## august overview 2022

---

mo	1
tu	2
we	3
th	4
fr	5
sa	6
su	7
mo	8
tu	9
we	10
th	11
fr	12
sa	13
su	14
mo	15
tu	16
we	17
th	18
fr	19
sa	20
su	21
mo	22
tu	23
we	24
th	25
fr	26
sa	27
su	28
mo	29
tu	30
we	31





01.08

Monday

02.08

Tuesday

03.08

Wednesday

04.08		Thursday	
05.08		Friday	
06.08	Saturday	07.08	Sunday

08.08

Monday

09.08

Tuesday

10.08

Wednesday

11.08		Thursday	
12.08		Friday	
13.08	Saturday	14.08	Sunday

15.08

Monday

16.08

Tuesday

17.08

Wednesday

18.08		Thursday	
19.08		Friday	
20.08	Saturday	21.08	Sunday

22.08

Monday

23.08

Tuesday

24.08

Wednesday



25.08		Thursday	
26.08		Friday	
27.08	Saturday	28.08	Sunday

29.08

Monday

30.08

Tuesday

31.08

Wednesday

01.09		Thursday	
02.09		Friday	
03.09	Saturday	04.09	Sunday

## Questions? Problems? The advisors at HSB will help you!

During your studies, the focus is on your course of study. Your lecturers are your first point of contact for all questions concerning your subject, the study structure and examinations. But even beyond that, there is a lot to organize in your life - and sometimes things just get stuck. In this case, you will find advice and help at the various counseling services offered by the Bremen University of Applied Sciences. If you have questions about your studies, finances or personal concerns, you can turn to the various advisory services.

### **Here we will find answers together to questions about:**

- Orientation
- application
- admission
- exams
- stay abroad
- Career entry
- Exam nerves
- Difficulties in studying
- Doubts about studying
- Further education
- Financing of studies (general)
- BAföG
- Scholarships
- Further support options
- Study & Family
- Studying with disabilities
- Personal worries & needs
- Discrimination
- Acute emergencies

---

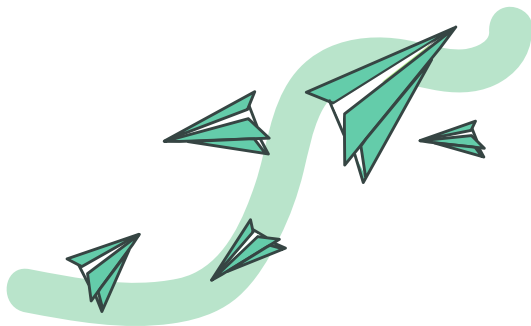
The advisors at HSB are networked with each other and can refer you to the right place for your concerns - should you not have landed directly at the right place. You can find all counseling services at:

**[www.hs-bremen.de/beratung](http://www.hs-bremen.de/beratung)**

You are also welcome to contact the Central Student Advisory Service (ZSB). We will tell you where to go with your request:

Central Student Advisory Service (ZSB)- the „Family Office for Students“ is also located here, as well as the „Inclusive Studying“ advisory service and the advisory service for „international students“ (students who spend their entire studies at HSB).

**[hs-bremen.de/studienberatung](http://hs-bremen.de/studienberatung)**



## Further counseling services

---

### **ENROLLMENT AND EXAMINATION OFFICE**

[hs-bremen.de/d3](https://hs-bremen.de/d3)

---

### **INTERNATIONAL OFFICE (IO) AND DECENTRALIZED INTERNATIONAL OFFICES (DIOS)**

[hs-bremen.de/international-office](https://hs-bremen.de/international-office)

---

### **EQUAL OPPORTUNITY OFFICE**

[hs-bremen.de/gleichstellungsstelle](https://hs-bremen.de/gleichstellungsstelle)

---

### **CENTER FOR TEACHING AND LEARNING (ZLL)**

[hs-bremen.de/zll](https://hs-bremen.de/zll)

---

### **CAREER SERVICE**

[hs-bremen.de/career-service](https://hs-bremen.de/career-service)

---

### **START-UP SERVICE**

[hs-bremen.de/internet/de/forschung/  
transfer/existenzgruendungen](https://hs-bremen.de/internet/de/forschung/transfer/existenzgruendungen)

---

---

**STATE AND UNIVERSITY LIBRARY (SUUB)**

[suub.uni-bremen.de](http://suub.uni-bremen.de)

---

**ASTA AS WELL AS ASTA BAFÖG- AND  
SOCIAL COUNSELING**

[asta-hsb.de](http://asta-hsb.de)

---

**PSYCHOLOGICAL COUNSELING CENTER (PBS)  
OF THE STUDIERENDENWERK (STUDENT UNION)**

[stw-bremen.de/de/beratung-soziales/  
psychologische-beratung](http://stw-bremen.de/de/beratung-soziales/psychologische-beratung)

---

**SOCIAL COUNSELING OF THE STUDIERENDENWERK**

[stw-bremen.de/de/beratung-soziales/  
sozialberatung](http://stw-bremen.de/de/beratung-soziales/sozialberatung)

---

## imprint:

editor: AStA der Hochschule Bremen

contact: AStA der Hochschule Bremen  
Neustadtswall 30, Raum M07  
28199 Bremen

Tel. : +49 421/59053643

Mail: [asta@hs-bremen.de](mailto:asta@hs-bremen.de)

Web: [www.asta-hsb.de](http://www.asta-hsb.de)

editorial staff:

Template: Joana Hawner / Marc Renken

editorial: Binta Jadama / Merit Mikhail

Design: [clara.o.correa@web.de](mailto:clara.o.correa@web.de)

**All statements without guarantee.**



**EINFACH  
MAL  
WAS TOTAL  
VERRÜCKTES  
MACHEN!**

**...KANDIDIEREN!**

112055  
WWW.ASIALESERBEWAHLEN  
WWW.ASIALESERBEWAHLEN

  
Der Wahlausschuss





